

The Greater Saint Charles Convention & Visitors Bureau has announced its publication of the 2009 Visitors Guide. This year's guide is a commemorative edition highlighting St. Charles' Bicentennial anniversary. The 2009 guide is a unique edition in that it is printed in a "two-way, flip book" format or as it's called in the printing industry, a coming and going piece. According to CVB Director David Rosenwasser, the book contains the regular line-up of tourism details, including shopping, attractions, wineries, dining and accommodations.

As in year's past," he said, "the guide also highlights sports and recreation facilities as well as meeting and banquet options. In honor of the city's 200th anniversary, the flip side of the book focuses on historical aspects, including photos, a timeline and an introductory letter from Mayor Patti York and Council President Larry Muench."

The 2009 Visitors Guide is available free of charge at the CVB located in the historic district at 230 South Main Street. Individuals may also call the tourism office directly at 636-946-7776 for more information.

IF you happened by the future site of St. Charles' Community Freedom Center over the course of the Memorial Day weekend, then you no doubt noticed activities underway on the former K-Mart lot. ShowMe Aquatics & Fitness hosted a family-friendly carnival on Veteran's Memorial Parkway between Hwy. 94 and Zumbahl Road. "It was a terrific way to connect with the community and give this project some local visibility," said Patrick Banger, past Chairman of the ShowMe board of directors. According to Banger there will continue to be a plethora of activity underway as the project is on track with the recent application to the Planning & Zoning Commission. From there, it goes to the City Council for approval. "At this writing," Banger said, "we intend to host a ground-breaking ceremony at 10 a.m. on Thursday, September 10 and all are welcome to attend this momentous occasion."

Mayor Patti York indicated the center's oversight committee comprising members of the St. Charles City Council and ShowMe's Board of Directors continues to meet regularly to further design the facility's footprint, including the interior design. "One new addition to the plan is the inclusion of a party room that can be used for birthdays or simply for parental observation purposes while children are swimming," she said.

The City of St. Charles and ShowMe Aquatics are jointly building and managing the 105,000-square-

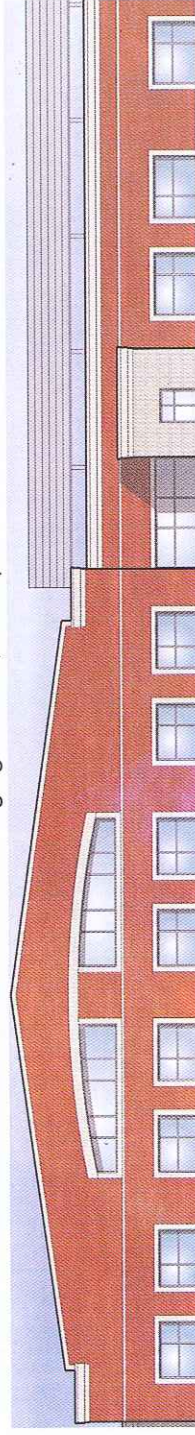
foot facility, which will include a fitness center, large warm water pool, lap pool and children's aquatic park. The oversight committee selected McCarthy Building Companies, Inc., as the construction manager and Hastings & Chiveita as architect to carry out the project. The civil engineering firm assigned to the project is Cole & Associates.

Here's a look at next steps:

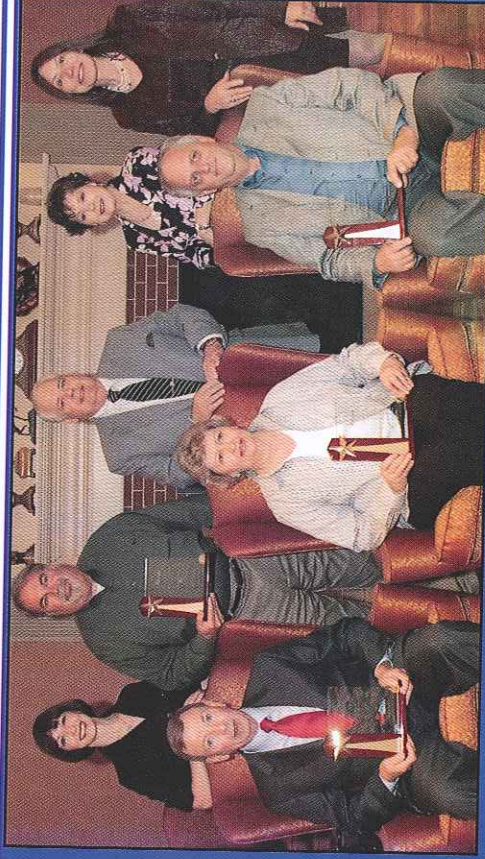
- **Thursday, Sept. 10** (10 a.m.) ground-breaking on the project site.
- **Week of Sept. 14** — demolition of the former K-Mart facility begins.
- **September 2009 and beyond** — continued site work and ongoing construction efforts.
- **Spring 2011** — facility opens for the benefit of the community.

Banger estimated the oversight committee will begin identifying membership packages and related usage fees next year. "We're also discussing future amenities which could potentially include a competition swimming pool and a multi-use athletic court to accommodate inline hockey and indoor soccer.

"From the outset," he concluded, "we've made a concerted effort to provide accommodations for specific target groups, especially in the way of locker room facilities. The center's basic amenities place it among the very best our region has to offer, but the overall design will offer a unique combination of additional features not found in any other single facility in the nation."



FOUR ST. CHARLES AREA BUSINESSES RECEIVE THE 2009 EMPLOYER OF THE YEAR



FRONT ROW (L. TO R.) -- DAVE STRAUTZ, PRESIDENT AND CEO OF FIRST STATE BANK OF ST. CHARLES; PAT BARTEAU OF ST. CHARLES OFFICE FURNITURE; AND ED VAN VOOREN PRESIDENT OF ELTEK LABS.
BACK ROW (L. TO R.) -- PATTI YORK, MAYOR OF ST. CHARLES; DAN FULLER, PRESIDENT OF EPC, INC.; PETE BARTEAU, PRESIDENT OF ST. CHARLES OFFICE FURNITURE; NADINE BOON, ECONOMIC DEVELOPMENT DIRECTOR FOR THE CITY OF ST. CHARLES; AND MONA VAN VOOREN.

Mayor Patti York bestowed Employer of the Year honors on four St. Charles area businesses during the May 20 St. Charles Chamber of Commerce general membership meeting at the Saint Charles Convention Center. "We are pleased to recognize local businesses who continue to grow and thrive in our city," said Mayor York. "These companies make a huge investment in our community and as employers provide support and benefits to their staff. St. Charles annually presents the award in the categories of service, manufacturing/industrial and retail; this year the city added a new category entitled the energy efficiency award. The 2009 honorees are:

Service - [First State Bank of St. Charles](#) – 206 North Fifth Street (636-940-5555)

A local independent bank serving St. Charles County for over 142 years, First State Bank of St. Charles believes civic involvement and employee participation are important values for any local community bank. First State Bank president and CEO David Strautz credits the 54 full- and part-time bank employees who serve customers at four banking centers in St. Charles County for the bank's longevity and reputation. "This bank's success stems from its ability to build lasting relationships through customer interactions and employee teamwork," Strautz said. "As a local community bank, we are proud to serve the businesses and families of St. Charles County. Our employees live and work in this community, and they truly care about the customers we serve every day."

Manufacturing/Industrial - [ELTEK Labs](#) – 248 Hughes Lane (636-949-5835)

ELTEK International Laboratories is founded on a philosophy – developed by the company's founder and president Ed Van Vooren – based upon the 'growth of human capital.' According to general manager Andrea Morse, Mr. Van Vooren believes that to develop professionals you must first begin by developing the person that will become the professional. "Much of the recognition that our employees receive here at ELTEK are founded in this philosophy," Morse said. The employees of ELTEK nominated Mr. Van Vooren for this honor as he is world-renowned for his knowledge and expertise in the electrical testing industry. Ed established ELTEK Labs – an electrical testing laboratory – in 1987. The company currently has 17 employees (including two UM/SU/Wash. U. engineering interns) and several external sales reps servicing over 450 customers worldwide.

Retail - [St. Charles Office Furniture](#) – 710 Fountain Lakes Blvd. (636-947-3172)

When it comes to surviving the current economic situation, the folks at St. Charles Office Furniture know all too well the value of retaining traditional values and customer service. "Despite the various barriers to doing just that, during today's economic climate the personal attention to detail has never been more important," said Ronald "Pete" Barbeau, president. The company has been in existence for 15 years, providing office space planning, new and used office furniture and related accessories. The six employees on staff at St. Charles Office Furniture excel based on the company's practice of providing acknowledgements for a job well-done, including financial bonuses. "From a civic standpoint, we also donate furniture to local churches and schools," added Barbeau. "Plus, we discount furniture for local charities and educational institutions." According to Pete and his wife Pat, the company expanded their facility in 2005, providing an additional 7,000 square feet of space.

Energy Efficiency - [EPC, Inc.](#) – 3941 Harry S. Truman Blvd. (636-443-1999)

EPC is one of the premier Asset Recovery Solution providers in North America. The company's mission is to provide its customers with the most seamless solutions for maximizing return and minimizing the risks associated with data security and improper handling of end-of-life IT assets. "We are committed to continual improvement," said vice president Dave Beal. EPC's environmental efforts earned the company the St. Louis Business Journal's 2008 Heroes of the Planet Award for the Sustainable Products category. "Our main business," added Beal, "is to refurbish or recycle computer equipment. If the computer/monitor/printer is in working order or needs minor repairs, we refurbish the unit and sell it. If the piece is too old or cannot be repaired, we demanufacture and recycle it." It takes less energy to recycle than to make these materials from scratch." EPC has been in business for 25 years and currently employs 240 people.